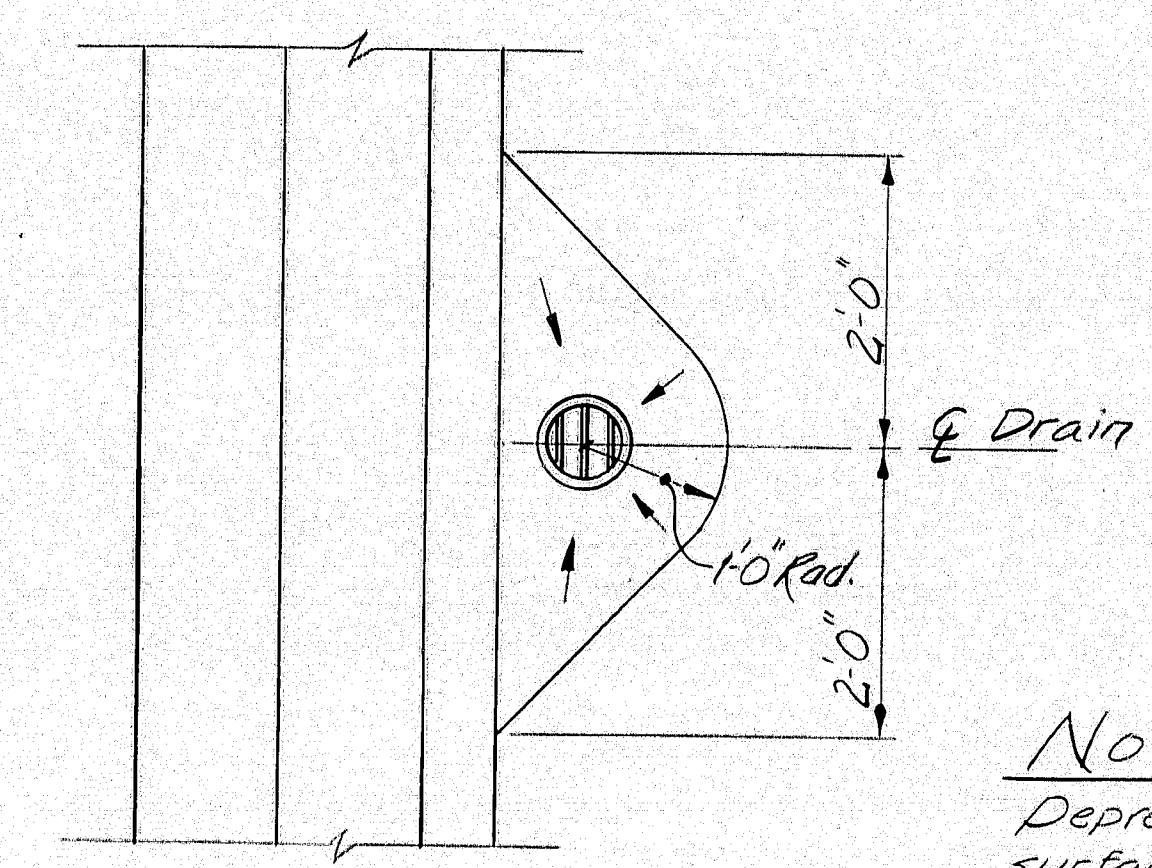
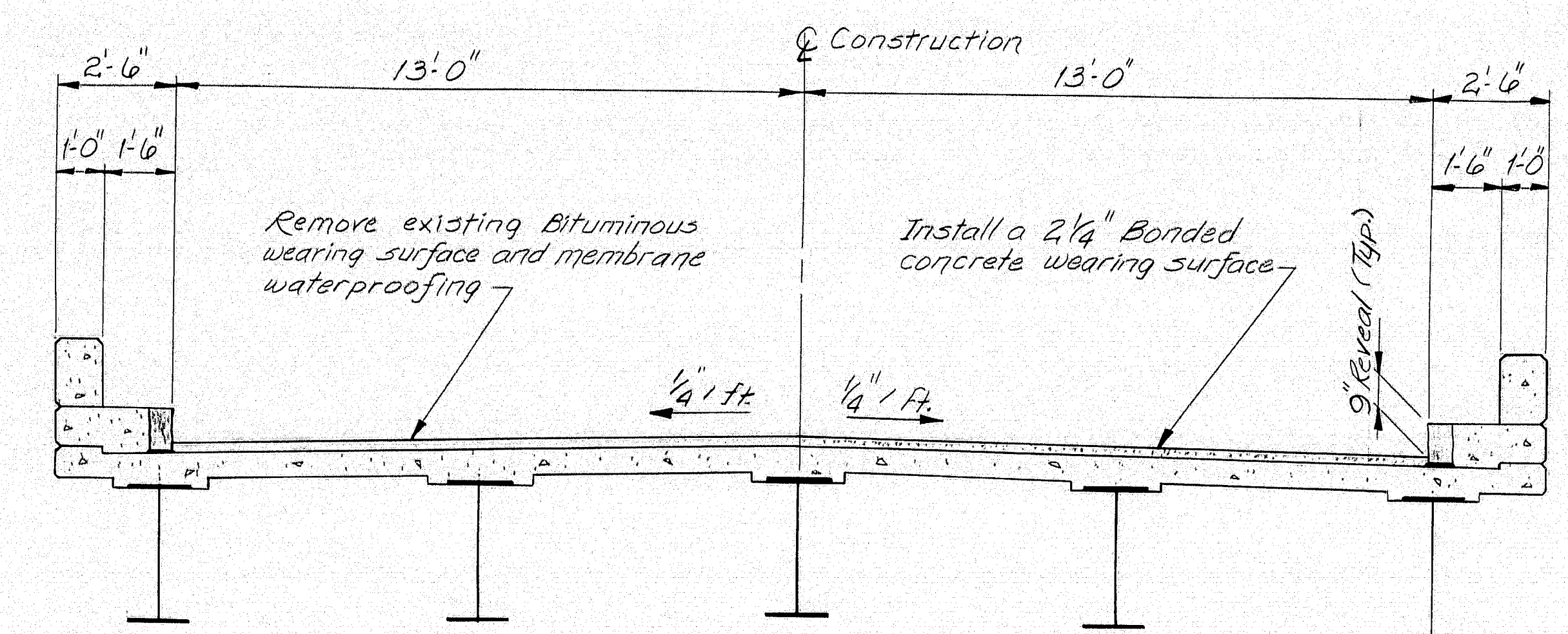
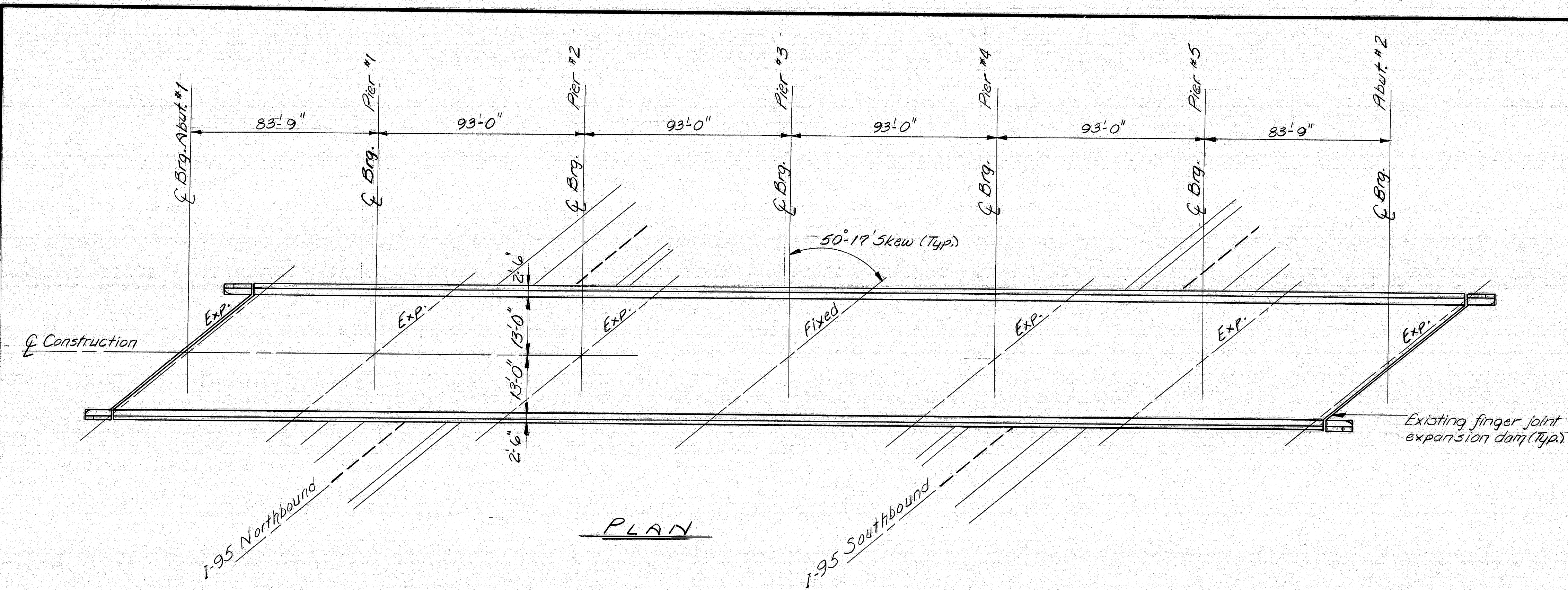


F.W.A. DIST. NO.	STATE	PROJECT NUMBER	SHEET NO.	TOTAL SHEETS
1	MAINE	5960	1	7



BONDING GROUT NOTES

The deck surface must be thoroughly sandblasted and cleaned to remove all dust or loose materials immediately before bonding grout is placed.

Deck surface to be surface dry with no standing water in pockets or low areas when bonding grout is applied.

The bonding grout shall consist of equal parts by weight of Portland Cement and concrete sand with the plus #8 material removed and mixed with enough water to give a thick, creamy consistency.

Bonding grout to be evenly broomed onto the concrete surface ensuring that the entire surface, including face of curb to the finish grade of the wearing surface, is coated and that no excess grout collects in low spots or pockets. Grout shall be thoroughly broomed under and around reinforcing bars.

Rate of application must be controlled so that the grout does not dry before the new concrete is placed.

GENERAL NOTES

1. Remove existing wearing surface.
2. If main reinforcing steel is exposed, concrete should be removed under the steel to a depth of 1" minimum.
3. Blast clean the slab before any placement of bonding grout or concrete. Note: SLAB IS TO BE SURFACE DRY BEFORE PLACEMENT OF BONDING GROUT.
4. Broom on a layer of bonding grout just prior to placing concrete. See bonding grout notes this sheet.
5. Concrete to be cured using burlap and water.
6. Concrete to be Class "A" and aggregate to be crushed ledge.
7. Minimum cover to be 2" unless otherwise noted.
8. Chamfer all exposed edges of concrete 1/2" unless otherwise noted.

SCOPE OF WORK

Remove existing Bituminous wearing surface and Membrane Waterproofing. Sand blast and grout deck as noted. Install a Bonded Concrete wearing surface as shown. Clean and paint structural steel.

MATERIALS

100 C.Y. of Wearing Surface Concrete

111-12

NOTE
Depress (1/2") wearing surface as shown by the direction of the arrows

STATE OF MAINE DEPARTMENT OF TRANSPORTATION
ROUTE NO. 7 BRIDGE OVER INTERSTATE 95 IN PLYMOUTH PENOBSCOT COUNTY
GENERAL PLANS
SHEET 1 OF 7 AUGUSTA, MAINE MAR. 1989

PROJECT DESIGN ENGINEER	BY	DATE
DESIGN - DETAILED	LSB	3-89
CHECKED		
REVISIONS		
FIELD CHANGES		
PLANS		

BUILDING 45701